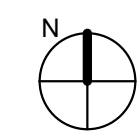


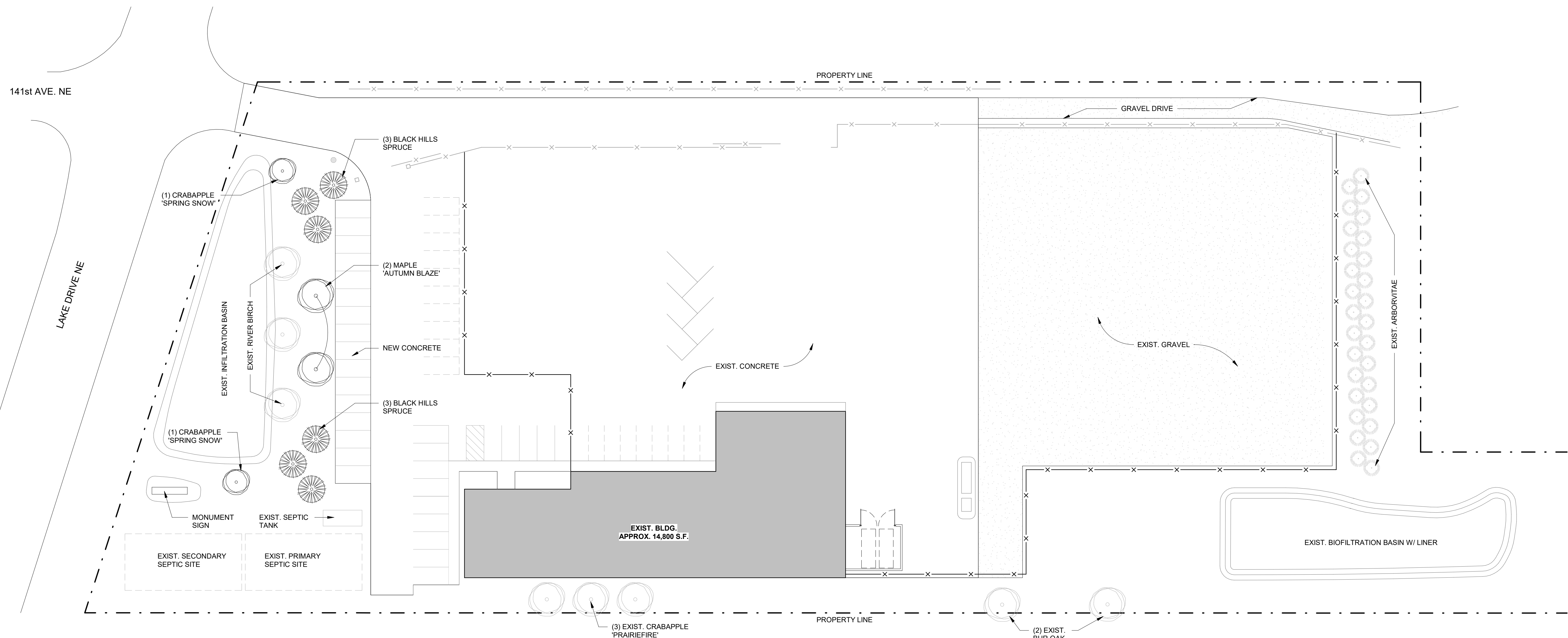
**PARKING ANALYSIS:**

EXISTING STALLS:	15
NEW STALLS:	16
FUTURE STALLS:	18
<b>TOTAL STALLS =</b>	<b>49</b>

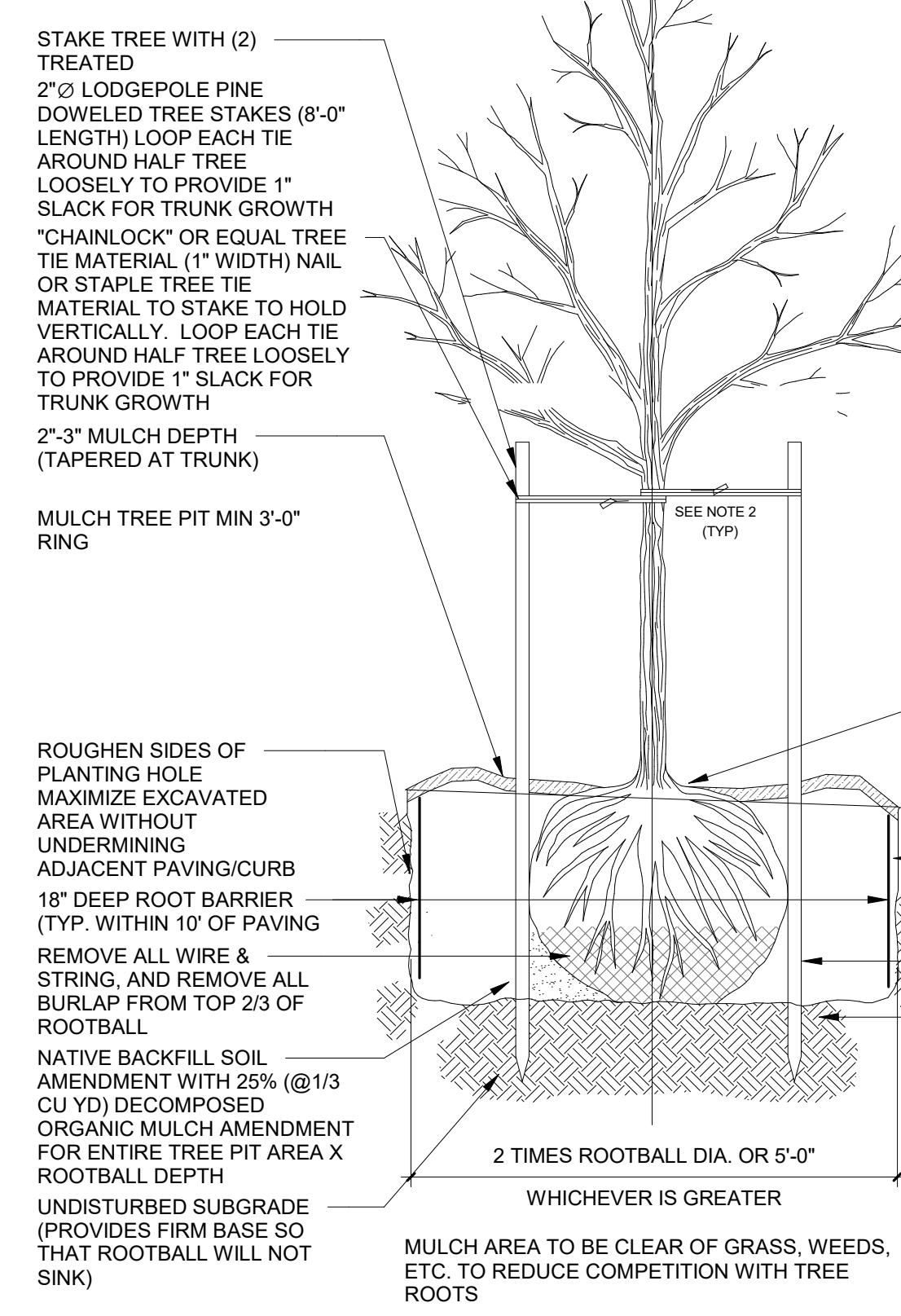
**1 SITE PLAN**  
 1" = 30'-0"



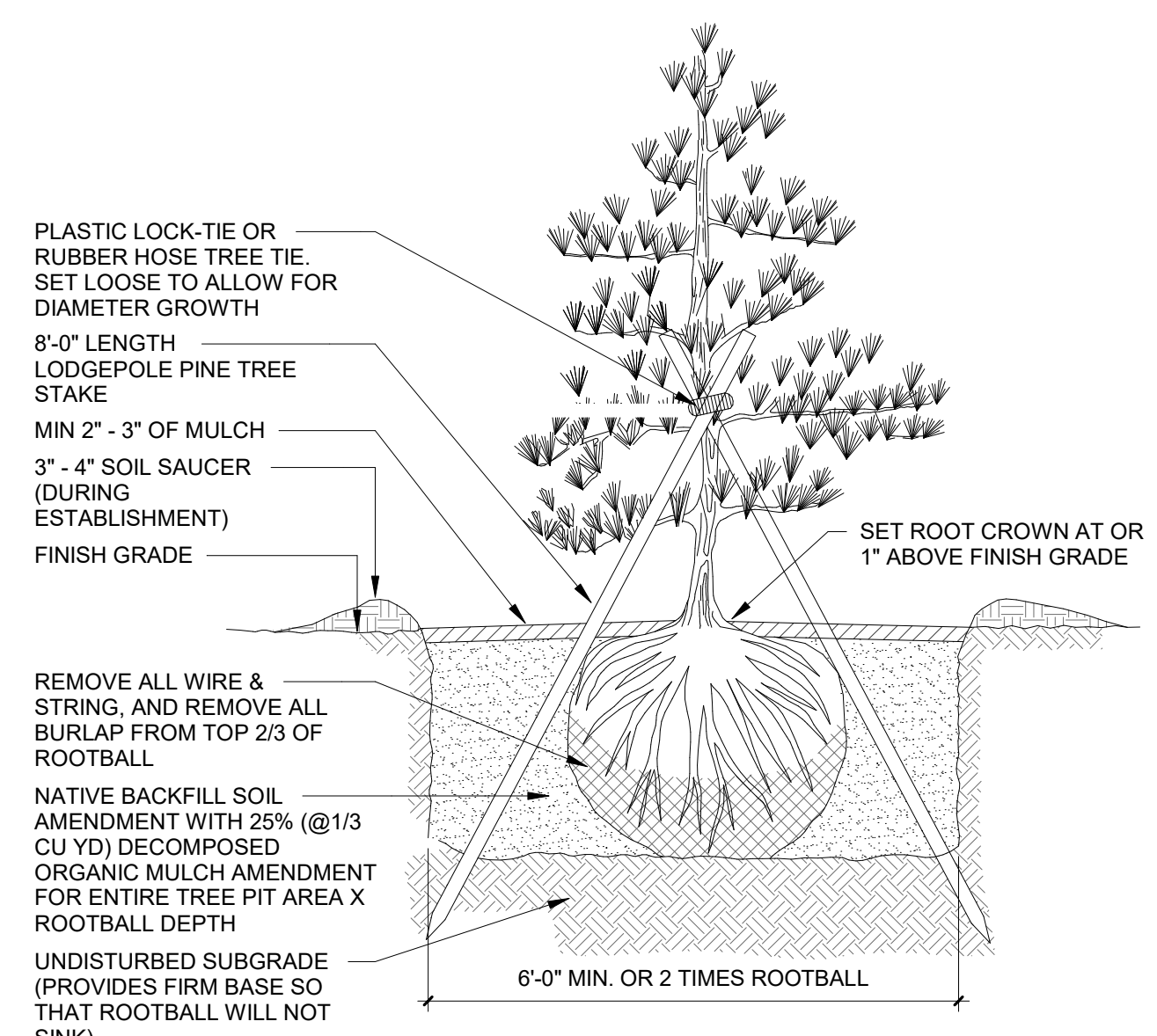




**1 LANDSCAPE PLAN**  
1" = 30'-0"



**NOTES:**  
1. INSTALLATION INCLUDES REMOVAL OF STAKES ONE YEAR AFTER INSTALLATION  
2. SHAPE SOIL SURFACE TO PROVIDE 3" DIAMETER WATERING RING



**PLANTING SYMBOL LEGEND**

- DECIDUOUS TREE
- CONIFEROUS TREE
- CONIFEROUS SHRUB

**LANDSCAPING SCHEDULE**

TYPE	COMMON NAME	BOTANICAL NAME	SIZE	QTY	NOTES
DECIDUOUS TREE	CRABAPPLE "SRING SNOW"	<i>Malus 'Spring Snow'</i>	2-1/2" B & B	2	CLUMP
DECIDUOUS TREE	MAPLE 'AUTUMN BLAZE'	<i>Acer freemanii</i>	2-1/2" B & B	2	
EVERGREEN	BLACK HILLS SPRUCE	<i>Picea Glauca var. Densata</i>	6" B & B	6	

- GENERAL NOTES**
- CONTACT DIGGER'S HOTLINE 5 WORKING DAYS PRIOR TO THE START OF DEMOLITION/CONSTRUCTION.
  - 6" OF TOPSOIL SHALL BE PROVIDED IN ALL GENERAL LANDSCAPE AREAS. LANDSCAPE CONTRACTOR SHALL VERIFY THAT SPECIFIED PLANTING SOIL DEPTH IS PRESENT PRIOR TO PLANTING.
  - ALL AREAS CALLED OUT FOR TURF SHALL BE NATIVE FESCUE MIX PROVIDED AND INSTALLED PER SPEC FROM SELECTED NURSERY.
  - ALL PLANT MATERIALS LISTED SHALL MEET THE STANDARDS OF THE AMERICAN NURSERY & LANDSCAPE ASSOCIATION FOR THE SIZES GIVEN.
  - ALL TREES SHALL BE STAKED WITH A MINIMUM OF TWO STAKES.
  - 3'-4" DEPTH OF DECORATIVE TRAP ROCK TO BE PLACED IN SPECIFIED LANDSCAPE BEDS. SIZE: 2 1/2" COLOR: GRAY
  - 3" DEPTH OF DOUBLE SHREDDED CYPRESS MULCH FOR ALL TREE MULCH RINGS.
  - 3.2 OZ NON-WOVEN FILTER FABRIC SHALL BE PLACED BENEATH ALL LANDSCAPE STONE.
  - 1/8" X 4" ALUMINUM EDGING-BLACK FINISH FOR ALL LANDSCAPE PLANTING BEDS/TURF-TREE RINGS.
  - COORDINATE ALL LANDSCAPE WORK WITH GAS, ELECTRIC, (INCLUDING MAIN SERVICE, SITE LIGHTING, CONDUITS AND SIGNAGE) CABLE AND TELEPHONE CONSTRUCTION AND RESPECTIVE TRADES FOR THE INSTALLATION OF SAID UTILITIES.



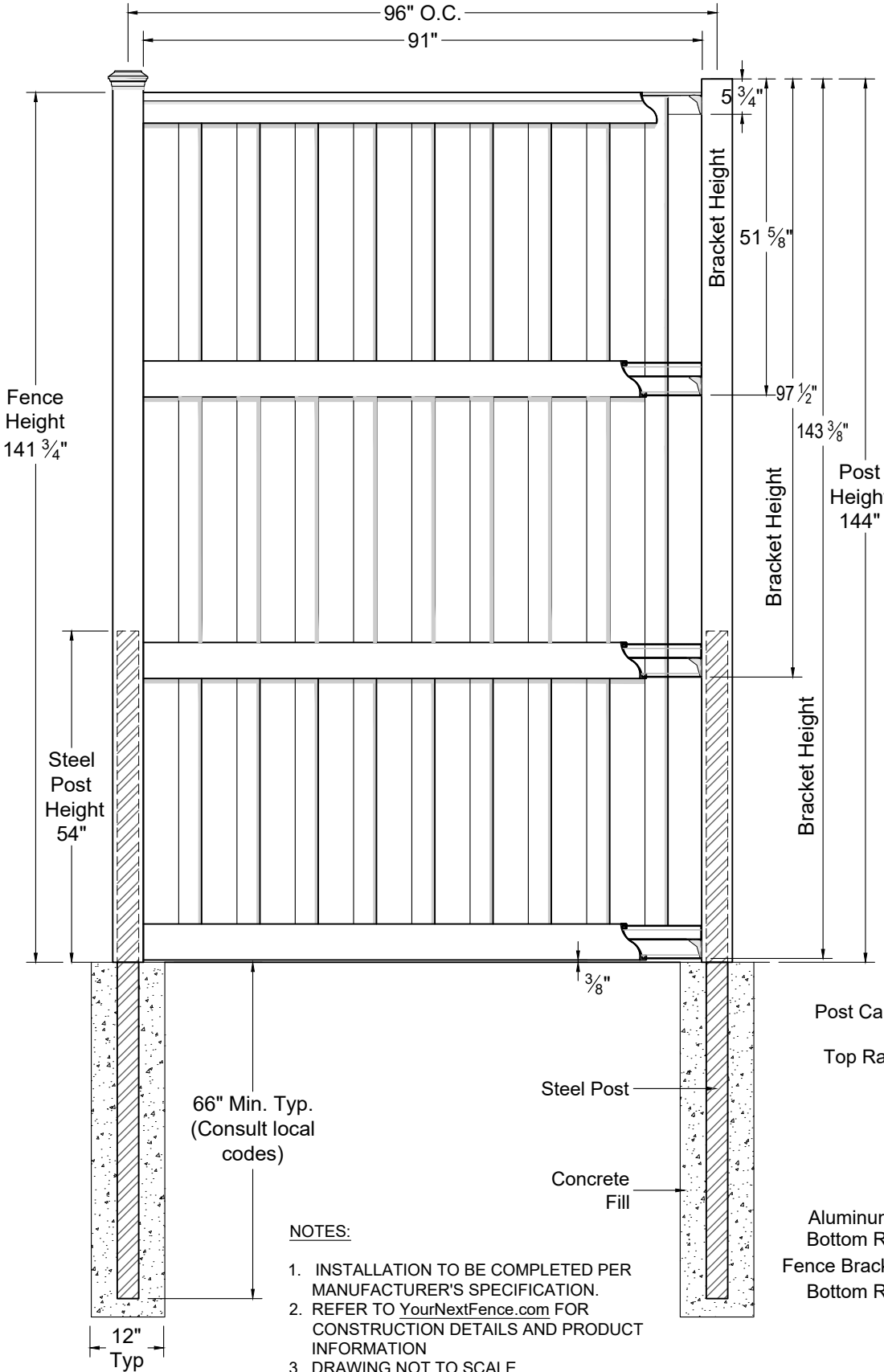
Installation Guide:






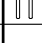

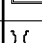


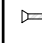
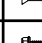
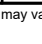

# Trex® Seclusions®

COMPOSITE FENCING SYSTEM

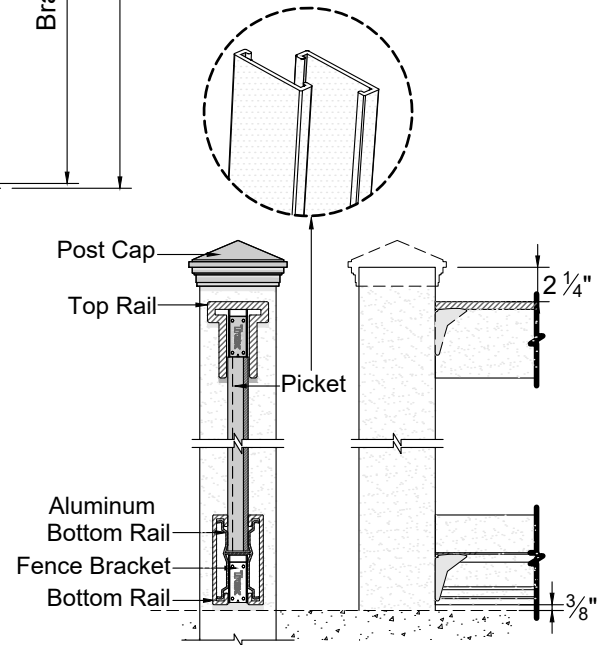


# Trex® Fencing



COMPONENT		QTY.	LENGTH
Post Cap	  	1	N/A
Post	 5" x 5"	1	144"
Galv. Steel Post	 3.5"x3.5"	1	120"
Top Rail	 4" x 5"	1	91"
Bottom Rail / Picket (Cut to 45 1/2")	 1"x 5 3/4"	28.5	91"
Bottom Rail / Picket	 1" x 5 3/4"	6	91"
Aluminum Bottom Rail	 2 3/4" x 5 1/8"	3	90 1/2"
Fence Bracket	 1 1/4" x 3 1/8"	8	N/A
Ext. Wood Screw	 #7	24	1 5/8"
	 #8	16	3/4"
	 #7	6	1"
Self-Drilling Screw	 #14	2	1 1/2"

Component lengths may vary



CUT VIEWS

**NOTES:**

1. INSTALLATION TO BE COMPLETED PER MANUFACTURER'S SPECIFICATION.
2. REFER TO [YourNextFence.com](http://YourNextFence.com) FOR CONSTRUCTION DETAILS AND PRODUCT INFORMATION
3. DRAWING NOT TO SCALE.

091019